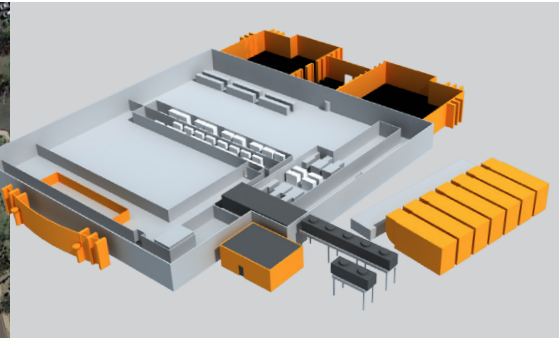
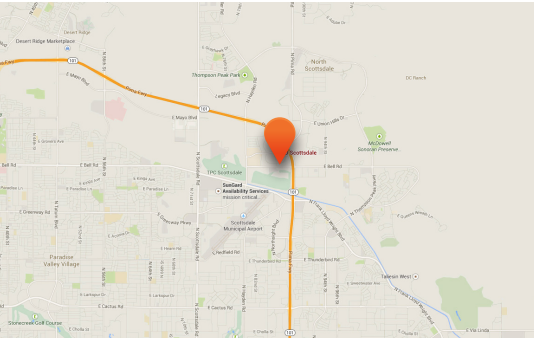




IO Scottsdale

IO Scottsdale is situated in one of the most geographically stable environments in the United States. The data center contains more than 98,000 square feet of usable raised floor and is accessible to customers 24x7xForever™.



Data Center Specifications

Site	4.5 acres (18,217 m ²)
Total Space	123,859 ft ² (11,506 m ²)
Construction Material	Reinforced concrete slab on grade
Structure	Two-story office and one-story data center
Exterior	Steel framed structure, concrete masonry exterior walls, reinforced concrete slab on grade
Data Center	98,455 ft ² (9,147 m ²)
Office	19,751ft ² (1,835 m ²)
Parking	120+ spaces
Access	24x7xForever™

Cooling Systems

Cooling	2,400 ton air cooled chilled water plant
Piping	Welded bi-directional design
Humidification	Yes
Backup Water System	Onsite storage
Water Feed	Redundant and diverse water feeds from utility
Leak Detection	Rope style

Access Control

Access control booths

Biometric screening

Digital video surveillance

Onsite guard staff

Visitor tracking

Power Systems

Utility: Arizona Public Service

Core Power: 24 MW

Power Conditioning: 10.2 MW

Power Backup Generators: Up to two (2) 1.75 MW and seven (7) 2.00 MW diesel generators

Fuel Storage: Onsite bulk fuel + multiple refuelling agreements

Telecommunications

Carrier Availability: Carrier-neutral

Fiber Access: Three (3) diverse fiber entry vaults with twenty-four (24) 4" PVC conduits each

Internet Service Providers: AT&T, CenturyLink, Cogent, Cox, Integra, Level(3), SRP, tw telecom, Verizon, Western Wimax, Zayo

Peering: Fabric available to data center customers

Cross-Connects: No monthly fees for data center users

NPA NXX: 480-563

CLLI: PRVYAZPPD50

+1.480.513.8500
io.com
info@io.com
@ioDataCenters